



Project n° 621365-EPP-1-2020-1-NO-EPPKA3-IPI-SOC-IN



Co-funded by the European Union

## About the Project

COSI.ed will upscale the proven good practice from the Erasmus+ project; Marginalisation and Co-created Education (MaCE) in five different countries and educational contexts representing Southern (Portugal and Spain), Eastern (Poland) and Northern Europe (Norway and Denmark). The model builds on the understanding that educational staff and the students co-create as part of a community of practice. Here the experts (educators) and the beginner (students) work side by side, learning together and developing knowledge and competence.

The young people learn about themselves, how to excel, the educational staff develop skills and understanding to socially include the young people. The initial hypothesis is that co-created education and training in which disadvantaged learners take part, educational staff, stakeholders and policymakers will contribute to educational and social inclusion of those groups who are usually marginalized.

The expectation is that the upscaling of the COSI.ed model to policy level will empower groups of disadvantaged young people all over Europe, radically increasing their educational success and completion rate and give European educational staff the knowledge and skills to social include vulnerable young people of all ages.

## Project Objectives



**1. Upscale model.** To upscale COSI.ed model to regional institutions in 5 new countries (Norway, Denmark, Portugal, Poland and Spain) by the end of the project period.



**2. Reduce Early Leaving.** To significantly reduce Early Leaving from Education and Training at different levels of the education system in the test arenas.



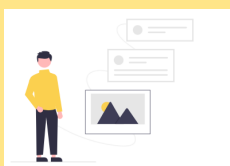
**3. Increase education stay.** To increase the percentage of students to complete/stay in education when compared to groups in the same education pathways WITHOUT the COSI.ed methodology (based on the national, regional or local statistics).



**4. Improve collaboration.** To develop collaborative methods of co-researching and co-creating with youth, educational staff, researchers, stakeholders and policymakers.



**5. Development more inclusive education.** Contribute to the development of a more inclusive and egalitarian educational model adapted to the needs and society of today.



**6. Redesign model for wide applicability.** Redesign the current model to be applicable in the different social and geographical contexts of Europe, in different disciplinary areas and in different types of institutions by providing effective tools, guidelines and scientific evidence.



**7. Model inclusion in education policies.** Work with and towards policymakers at different levels to implement the methodology at the systemic level in order to include the model in future inclusive education policies.

## Meet the Consortium

Eleven partners from five European countries (Norway, Denmark, Poland, Portugal, and Spain) are involved in the project:

- ✓ University of South-Eastern Norway (USN) | Norway
- ✓ Vestfold and Telemark Fylkeskommune (TVFK) | Norway
- ✓ VIA University College (VIA) Denmark
- ✓ FGU NORDVEST (FGU) | Denmark
- ✓ University of Warsaw (UW) | Poland
- ✓ Warsaw Centre for Socio-Educational Innovation and Training (WCIES) | Poland
- ✓ University of Porto-Centre for Research and Intervention in Education (CIIE) | Portugal
- ✓ Associação para a Educação de Segunda Oportunidade (AE20) | Portugal
- ✓ University of the Balearic Islands (UIB) | Spain
- ✓ European Anti-Poverty Network Illes Balears (EAPN-Naüm) | Spain
- ✓ Sociedad Cooperativa de Iniciativa Social y Formación (JOVENT) | Spain



You can follow all the information about the project at <https://cosied.eu/>

COSI.ed [official website in the European Union](https://cosied.eu/)